

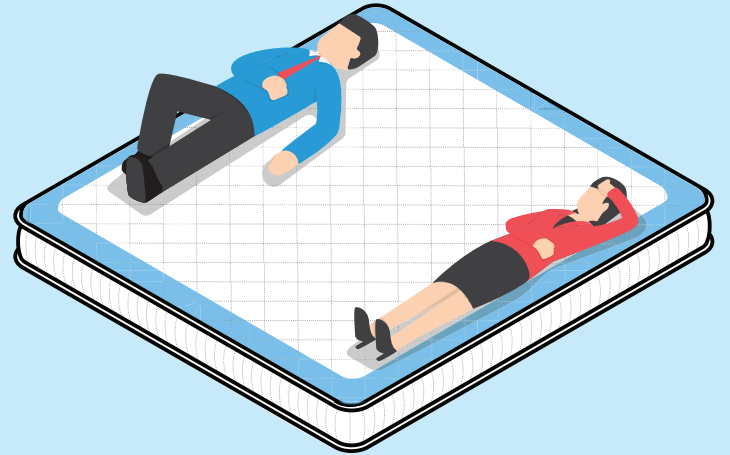
# Comfortable Support to the Edge



## IT'S ALL ABOUT COMFORT

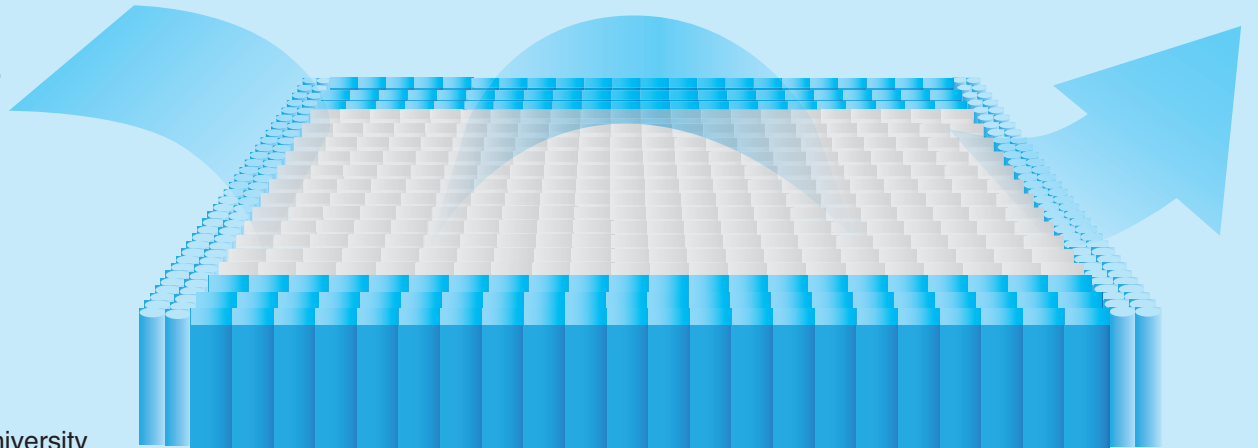
On average 26% more durable when comparing pre vs. post-test firmness of Quantum® Edge vs. foam edge (1.8-5.0 8" foam rail – tested 100,000 cycles at 60% compression).

Quantum® Edge Steel Perimeter outperforms foam encasement – offering greater durability, longer comfort life, and better support.



## SLEEP COOLER

Innersprings sleep up to 28% cooler than foam.\*

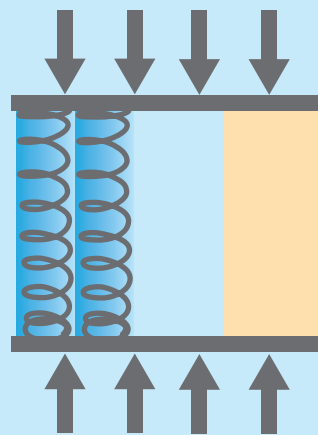


\* Research conducted by Kansas State University and the Institute of Environmental Research.

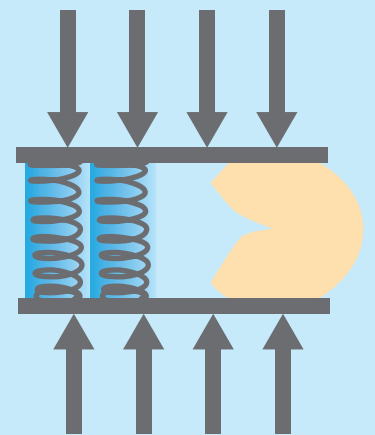
## BETTER SITTING EDGE, MORE SLEEPING SURFACE

Straight-line deflection – Coils designed for straight-line compression – designed to go straight up and down. This eliminates potential for foam rail buckling or bulging out to one side or the other when compressed.

Helps eliminate the feeling of roll-off – allowing the bed to be comfortably used from edge to edge, expanding the sleeping surface.



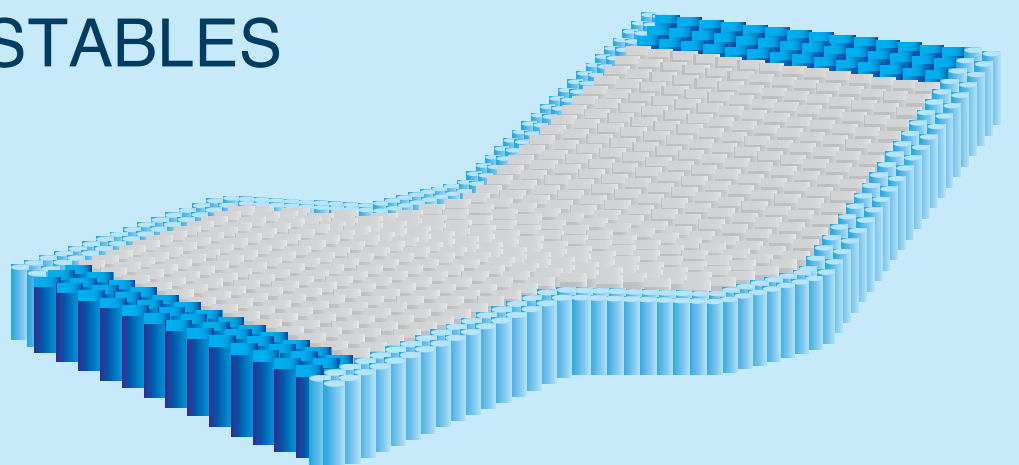
Deflection test – Quantum Edge vs. standard foam encasement



Quantum Edge compresses in a straight line while foam buckles

## THE CHOICE FOR ADJUSTABLES

Adjustable base compatibility – Quantum® Edge Steel Perimeter requires less force to bend, resulting in less wear and tear on an adjustable base's moving parts than foam encasement (about 24% easier to bend on average than foam encasement).



# Comfortable Support to the Edge

Quantum® Edge Side Support